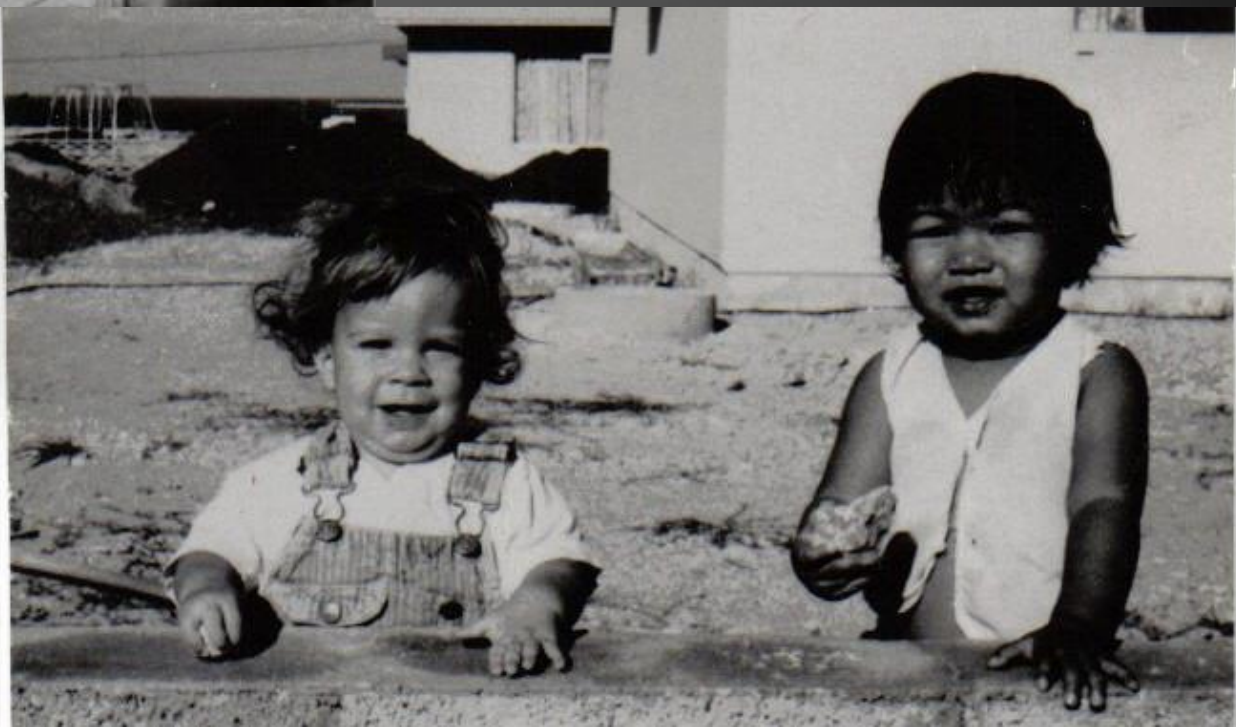
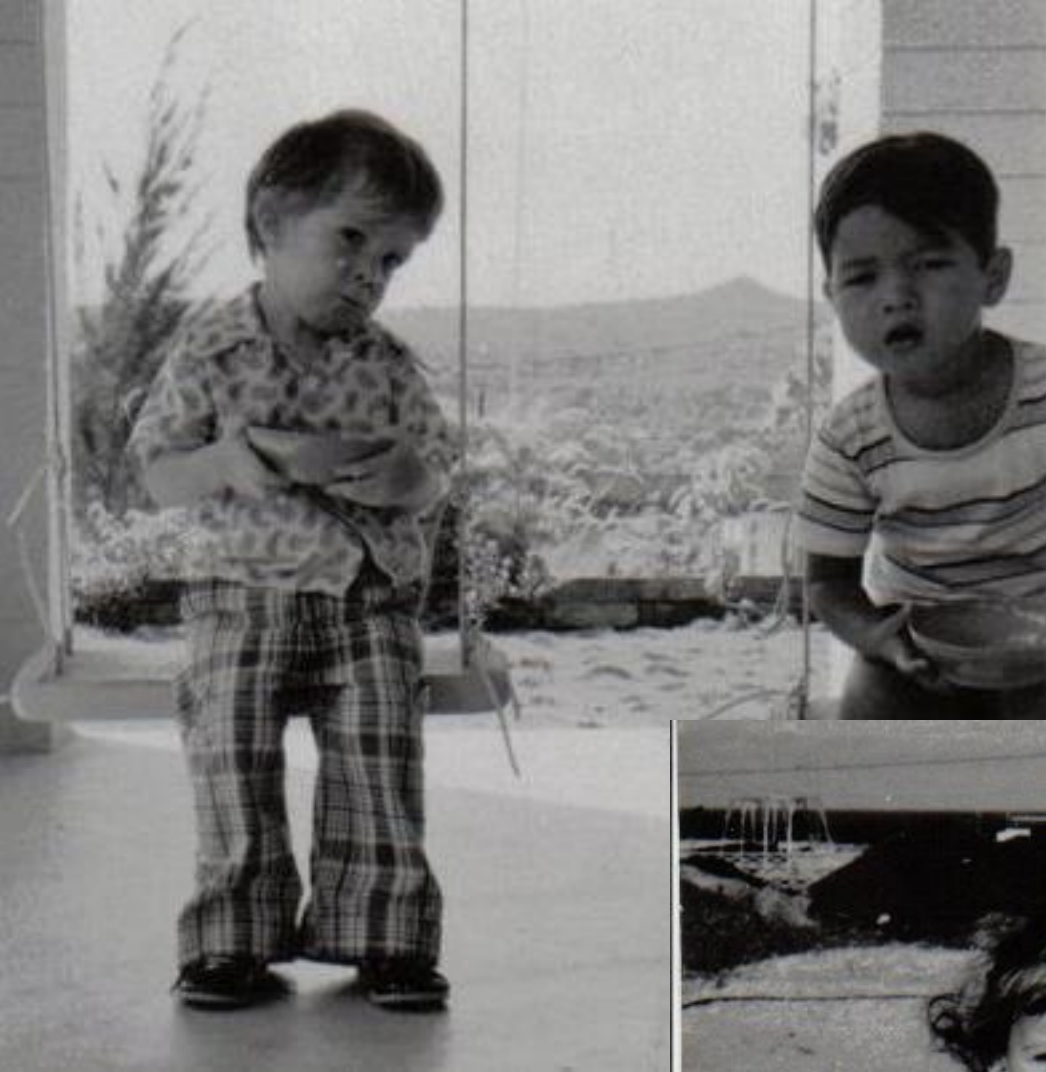


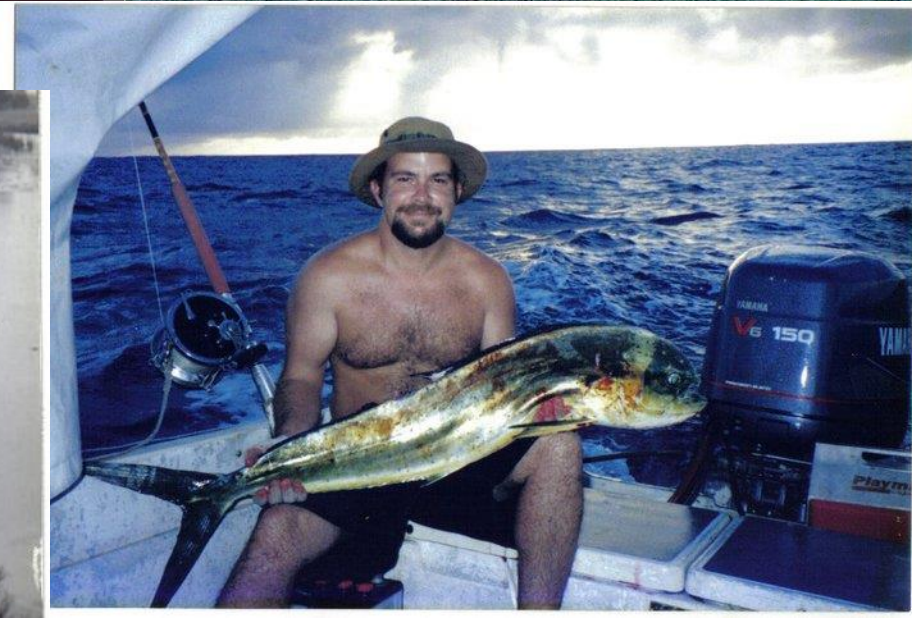
# History and Outlook of livestock Production on Tinian



Lawerence Duponcheel  
Tinian Cattlemen's Association  
[tiniancattlemen@gmail.com](mailto:tiniancattlemen@gmail.com)





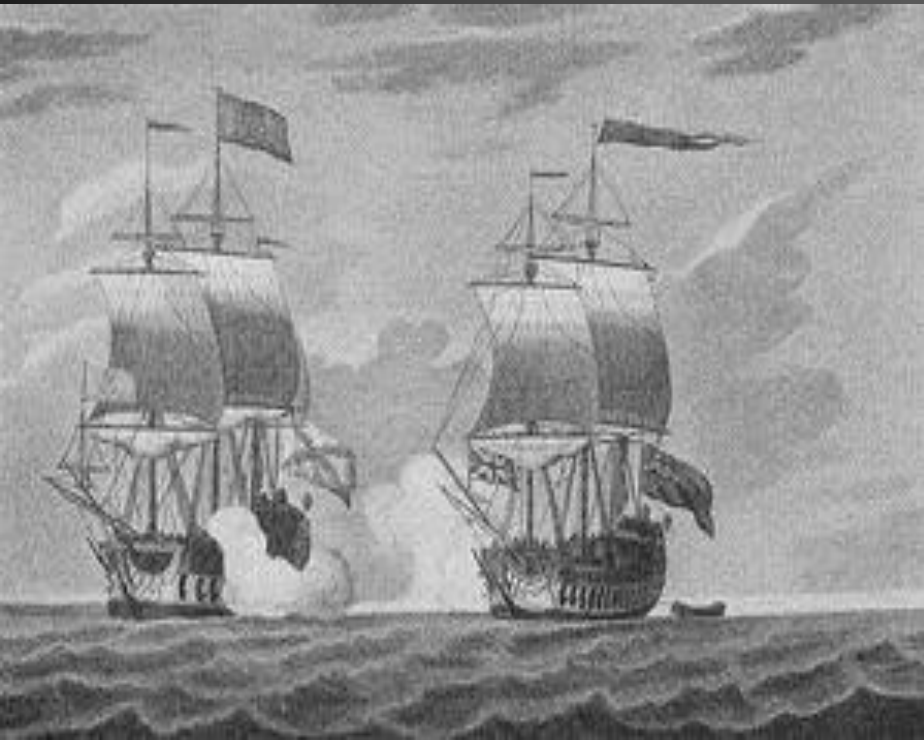
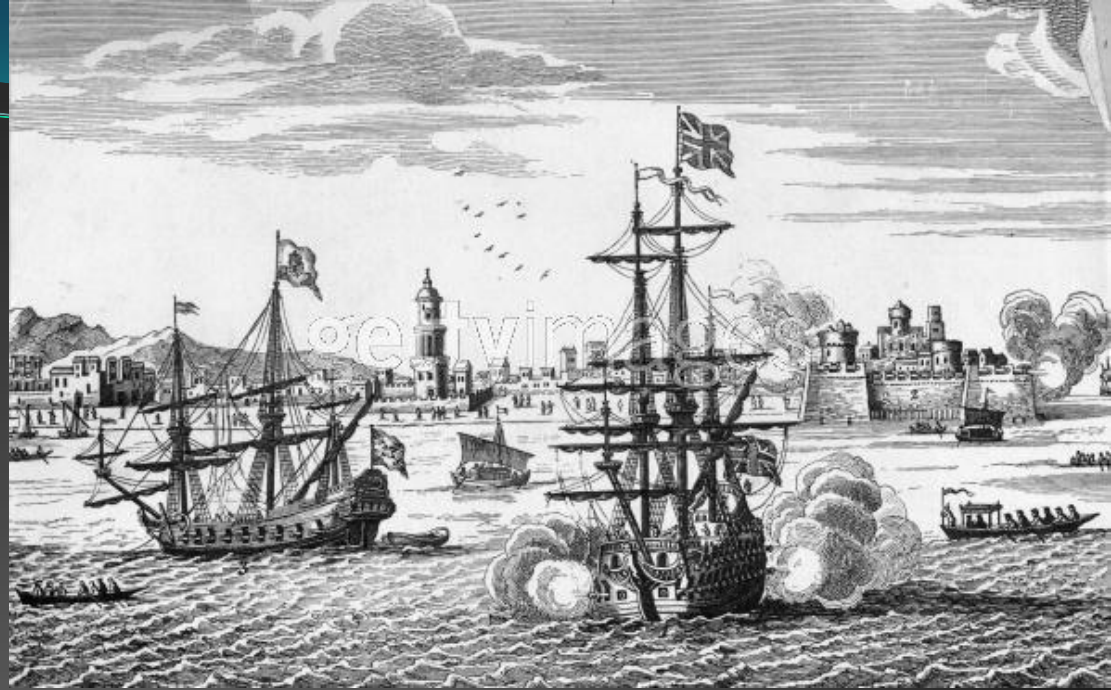








1742: Ship and Crew of the HMS Centurion arrive on Tinian.  
The destitute Voyagers were thankful for the abundance Of Cattle, Hogs, and Citrus trees that nourished them back to Health.



“It is not uncommon to see herds of Some thousands feeding together in a large Meadow, are certainly the most remarkable In the world; for they are all of them milk-white, except their ears, which are generally black.”

--Rev. Richard Walter





葉取作業(其ノ一)



養育調査



葉取作業(其ノ二)



サイパン支廳主催 刈取競技大會

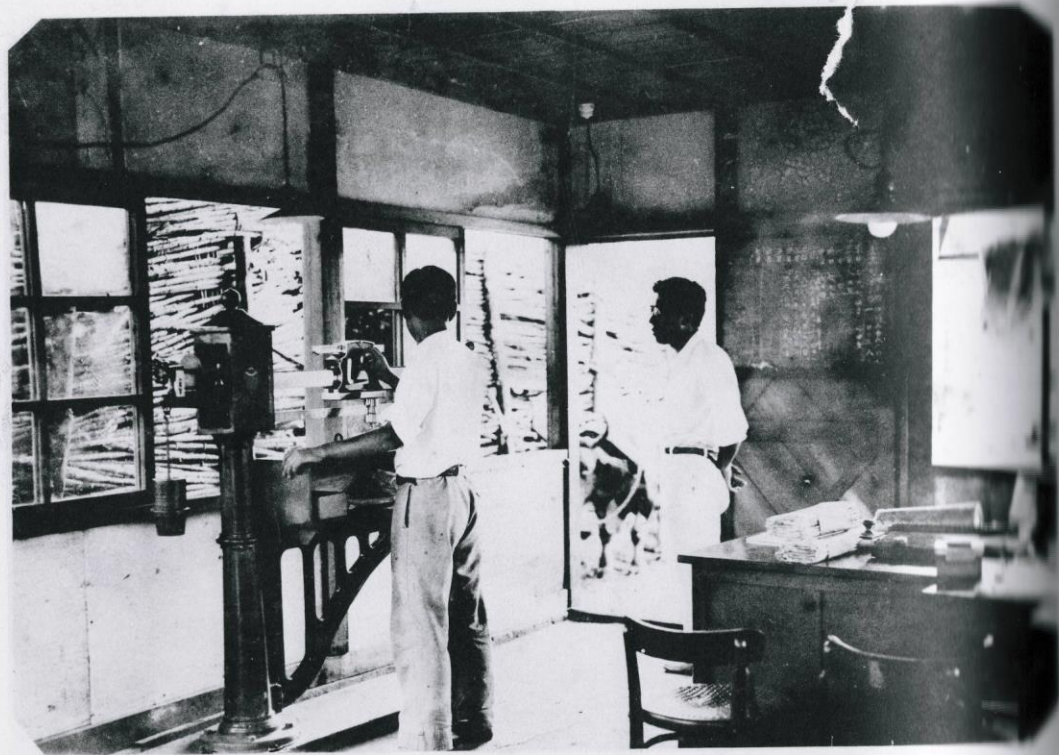


(共ノ一)



(共ノ二)





甘蔗檢量所



檢量所へ甘蔗ノ運搬

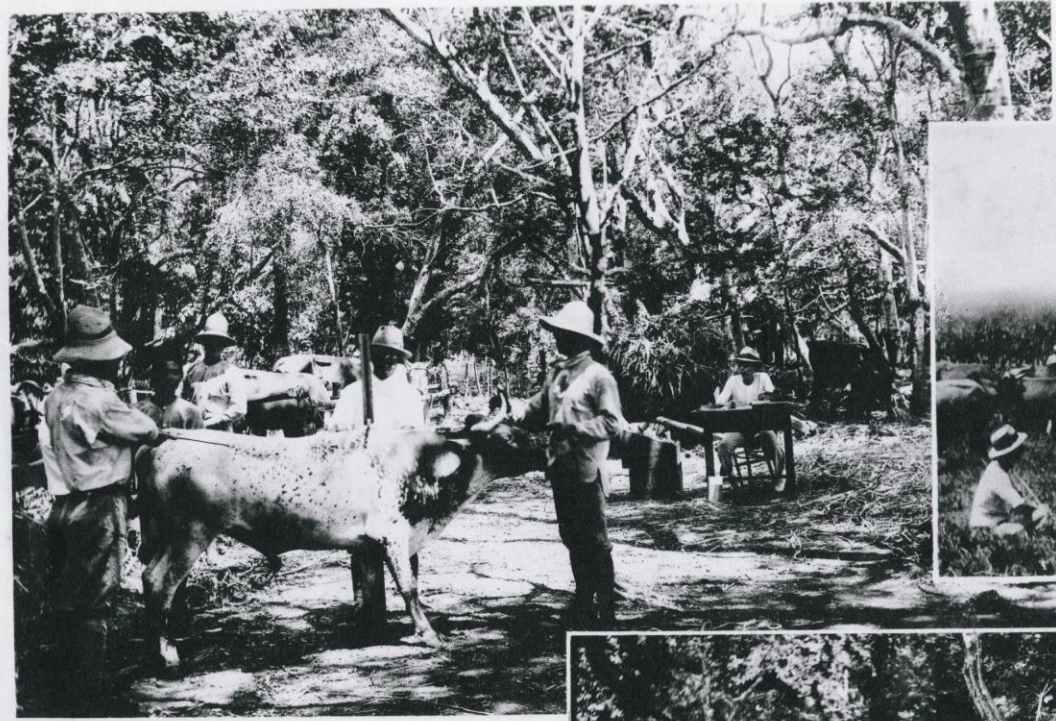




テニアン島ノ  
野牛



牧場 (共ノ四)



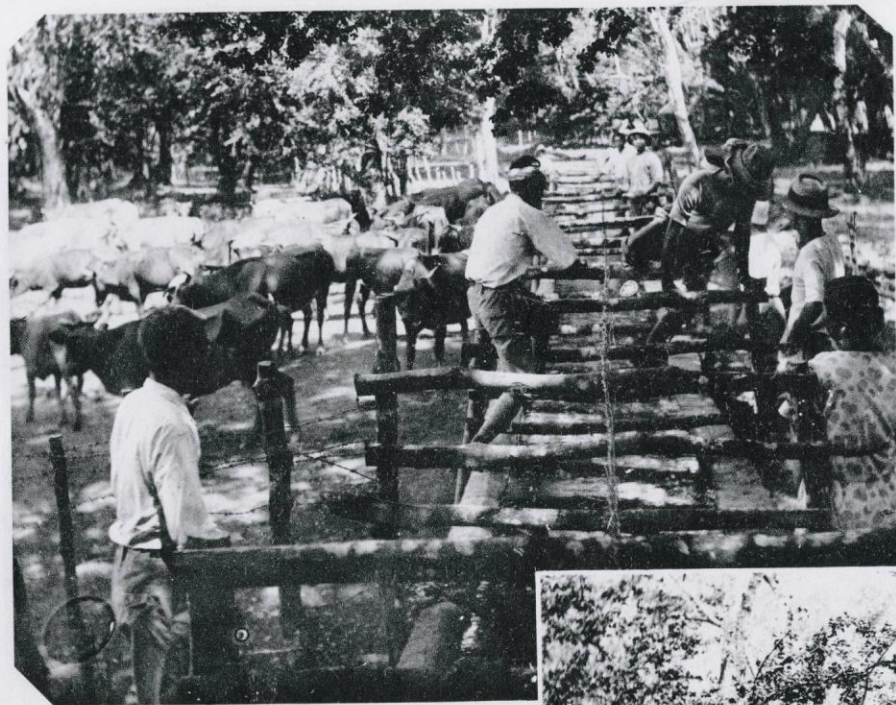
牧場ノ檢疫



牧場 (共ノ五)

ジユロー家畜牧場





(其ノ一)



(其ノ三)

ジユロー家畜牧場



(其ノ二)





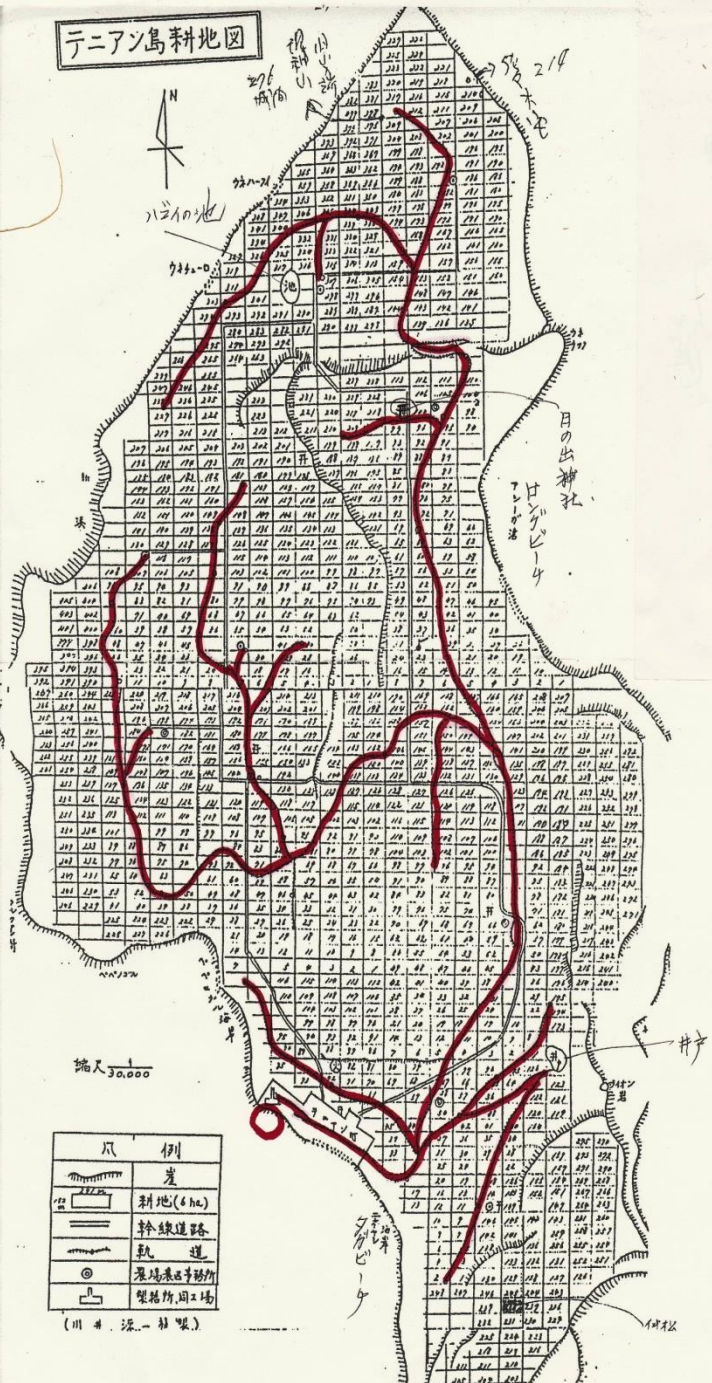
甘蔗運搬車



甘蔗運搬車



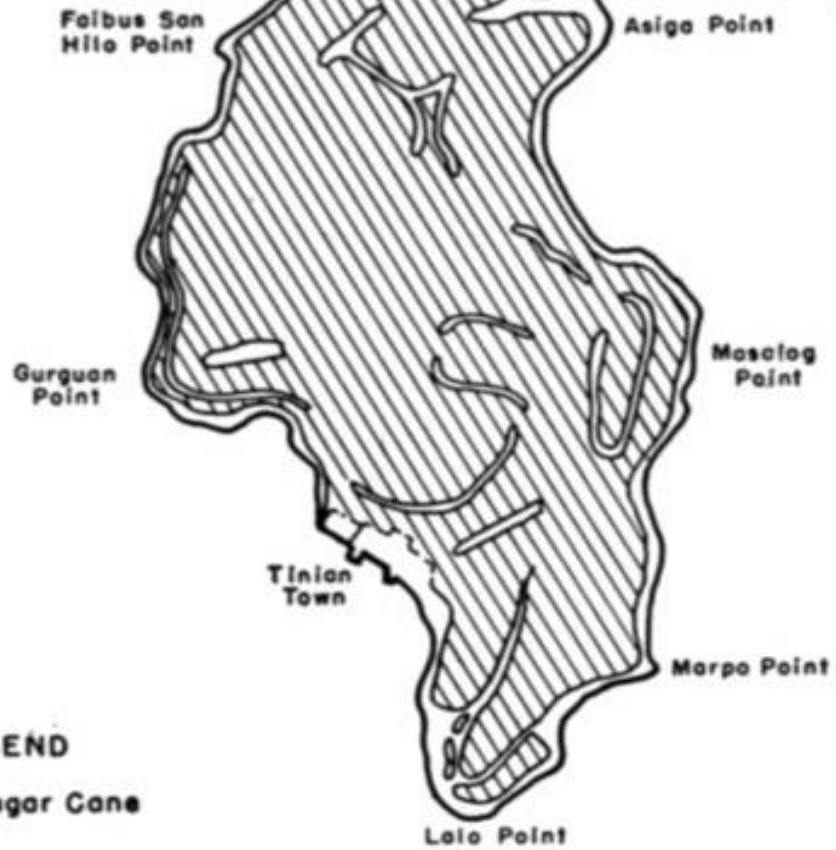
テニアン島耕地図



凡	例
	糖
	耕地 (6ha)
	幹線道路
	軌道
	郵便局
	製糖所工場

(川井 源一 編)

Total Area= 32.8 sq. mi.



LEGEND  
 Sugar Cane

AREAS UNDER SUGAR CULTIVATION ON TINIAN ISLAND

















TENIAN







CASUALTY--OXEN--This oxen was wounded on Tinian but was fixed up by the Marines. The ox had been hauling ammunition and the Marines would have missed his good services. Left to right: Pfc. Arthur Adherson, Chicago, Ill.; and Pfc. Warren Clark, Galena, Kansas.

187 AW 837

Tinian  
1 Aug 44  
Cpl. Angus Robertson

9 43 72

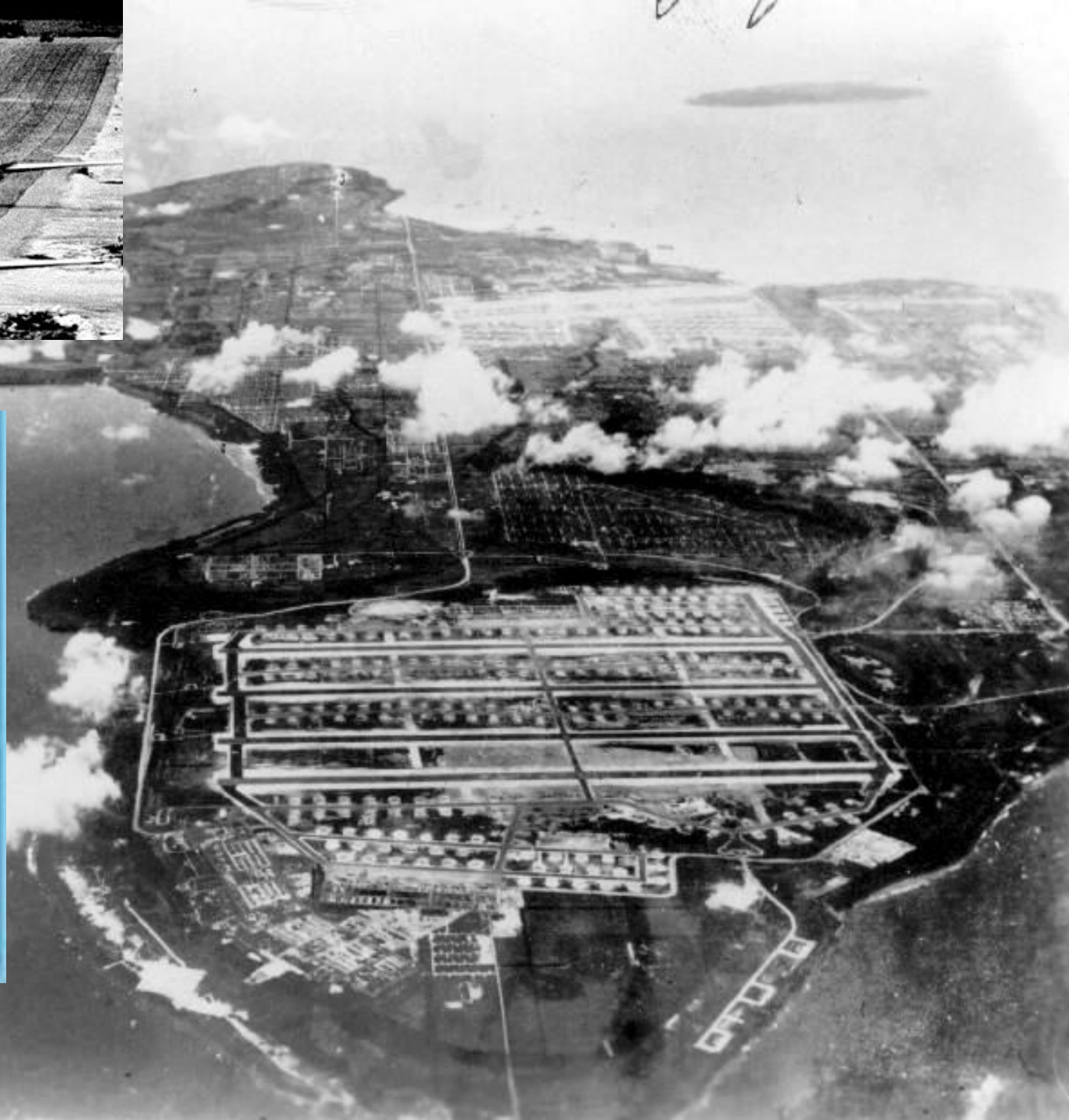


187 AW-837

GUNNERS' GOATS...Little Billy and Manny were just 2 kids taken in a home in the Marianas when taken in as pets by gunners in a Marine torpedo bomber squadron. L to r: Technical Sergeant William E. Southworth, turret gunner, of 456 W. 3rd St., Fulton, N. Y., and MT/Sgt. John W. Bruder, 41 Edmund St., Malden, Mass. The kids mother was killed during the assault on this tiny island--the wild goat herd refused to accept them, so

110184



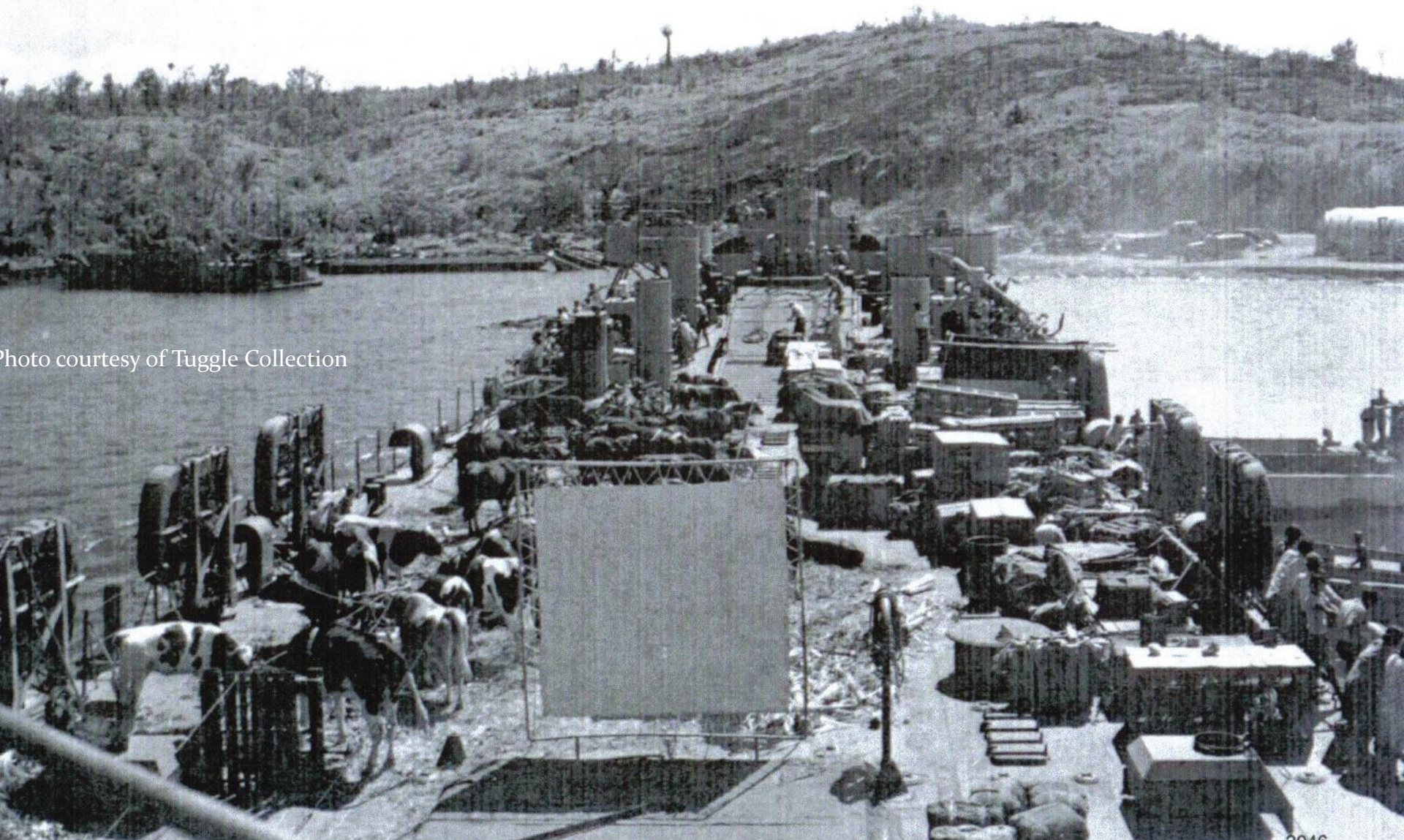


**TINIAN**



April 5, 1948- Residents Departing from Yap on LST-803 on their way to Tinian

Photo courtesy of Tuggle Collection





# Local Residents in route to Tinian

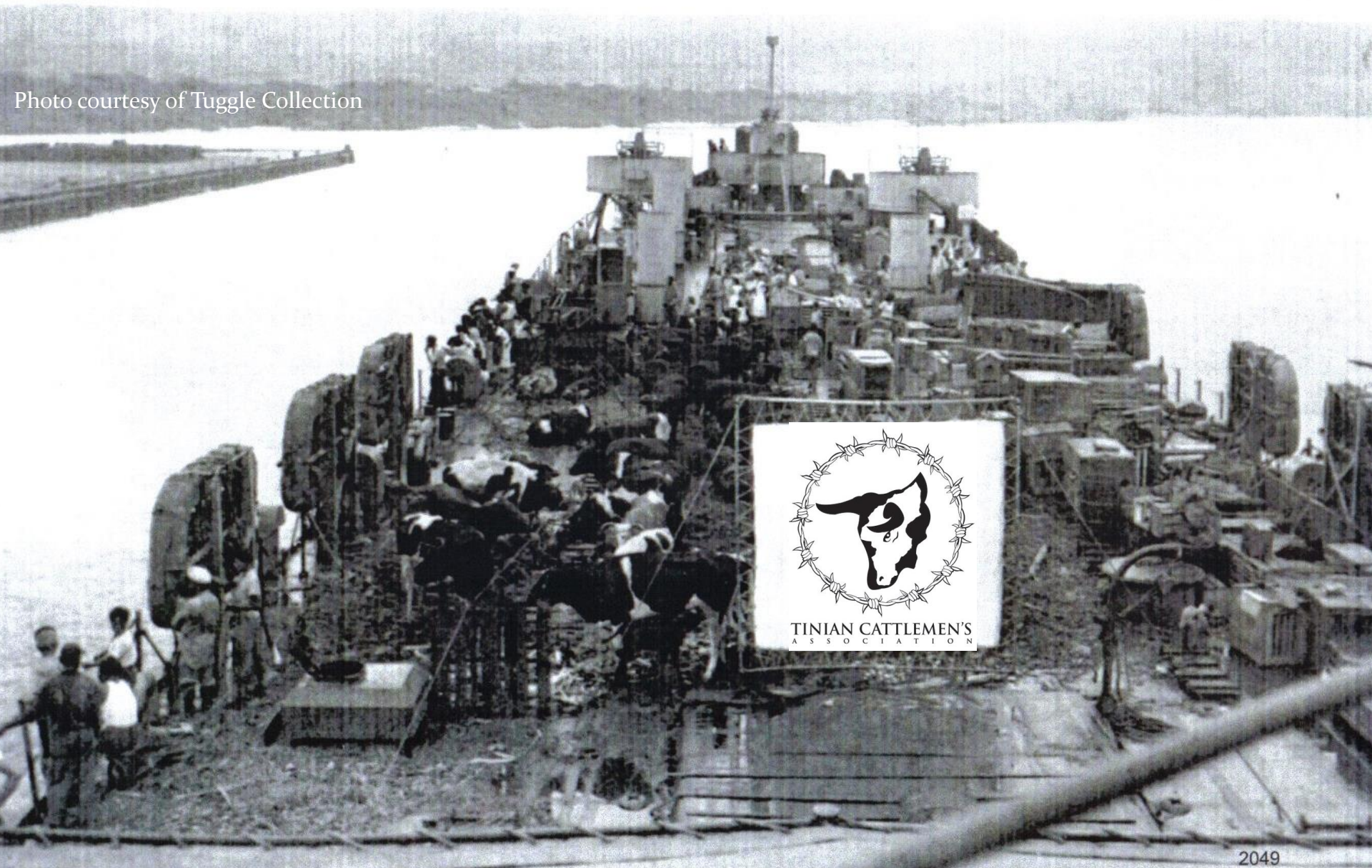
Photo courtesy of Tuggle Collection





April 8, 1948- Residents arrive and resettle on Tinian

Photo courtesy of Tuggle Collection





Residents unload livestock at the Tinian Doek

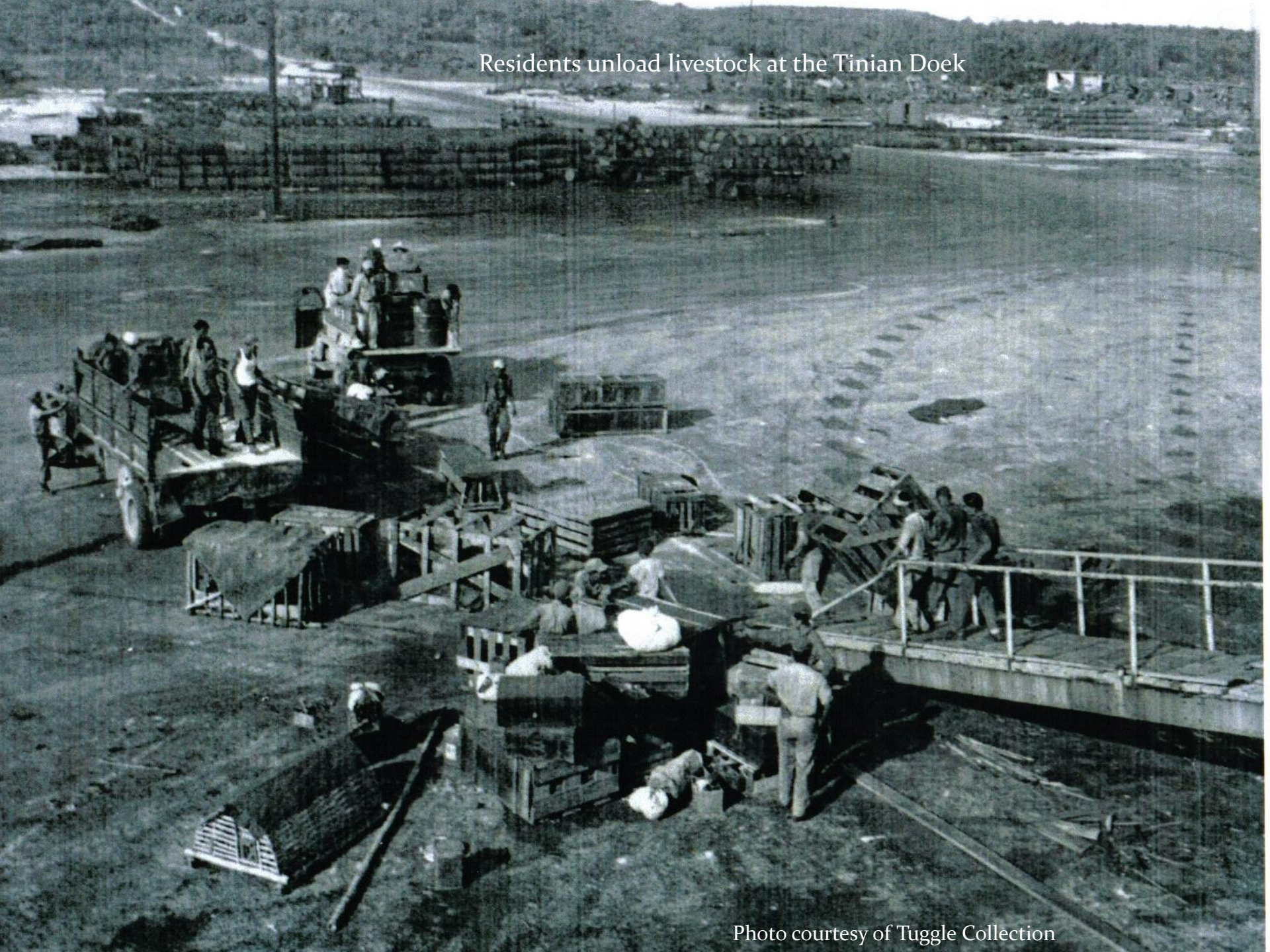
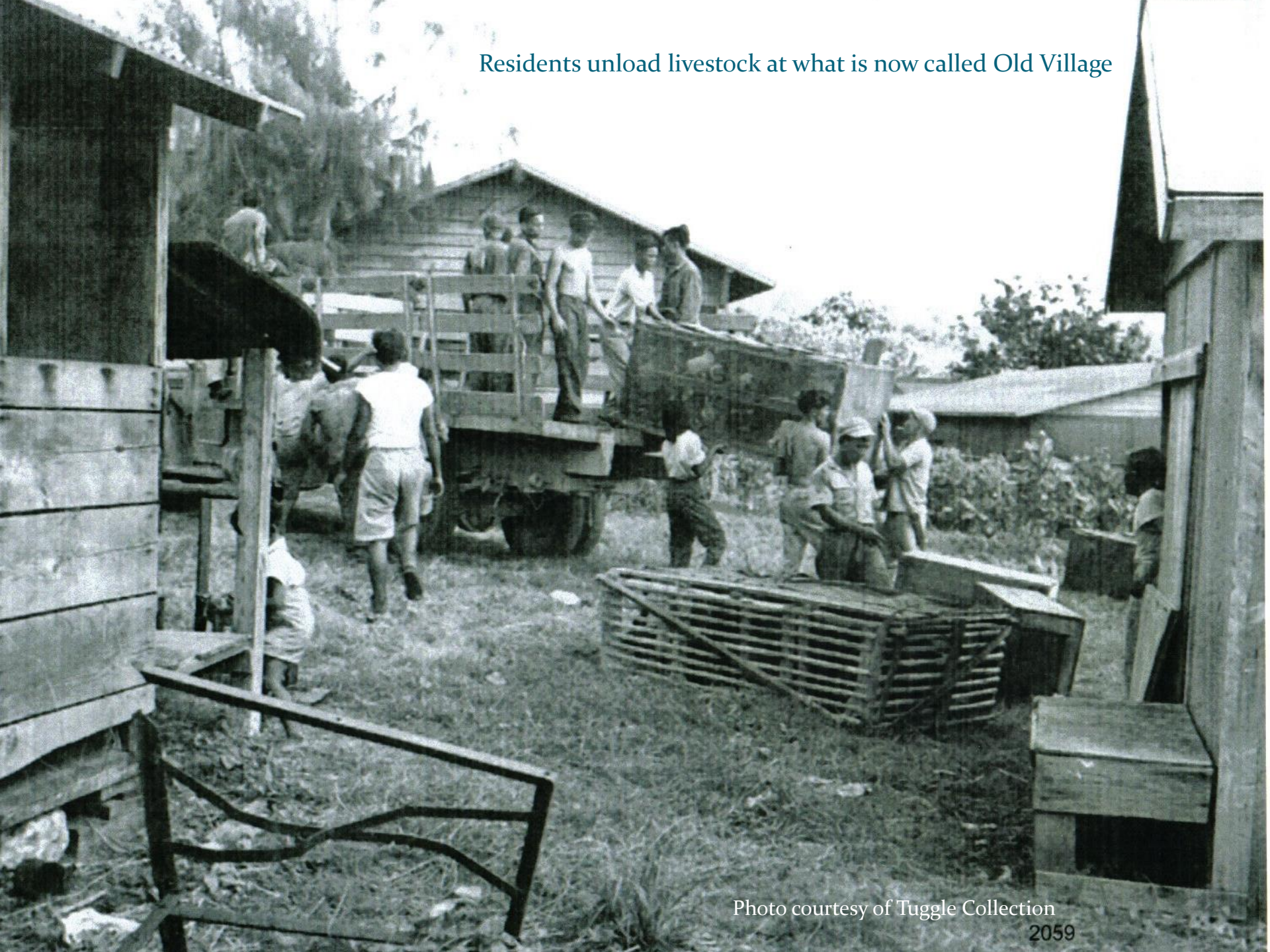


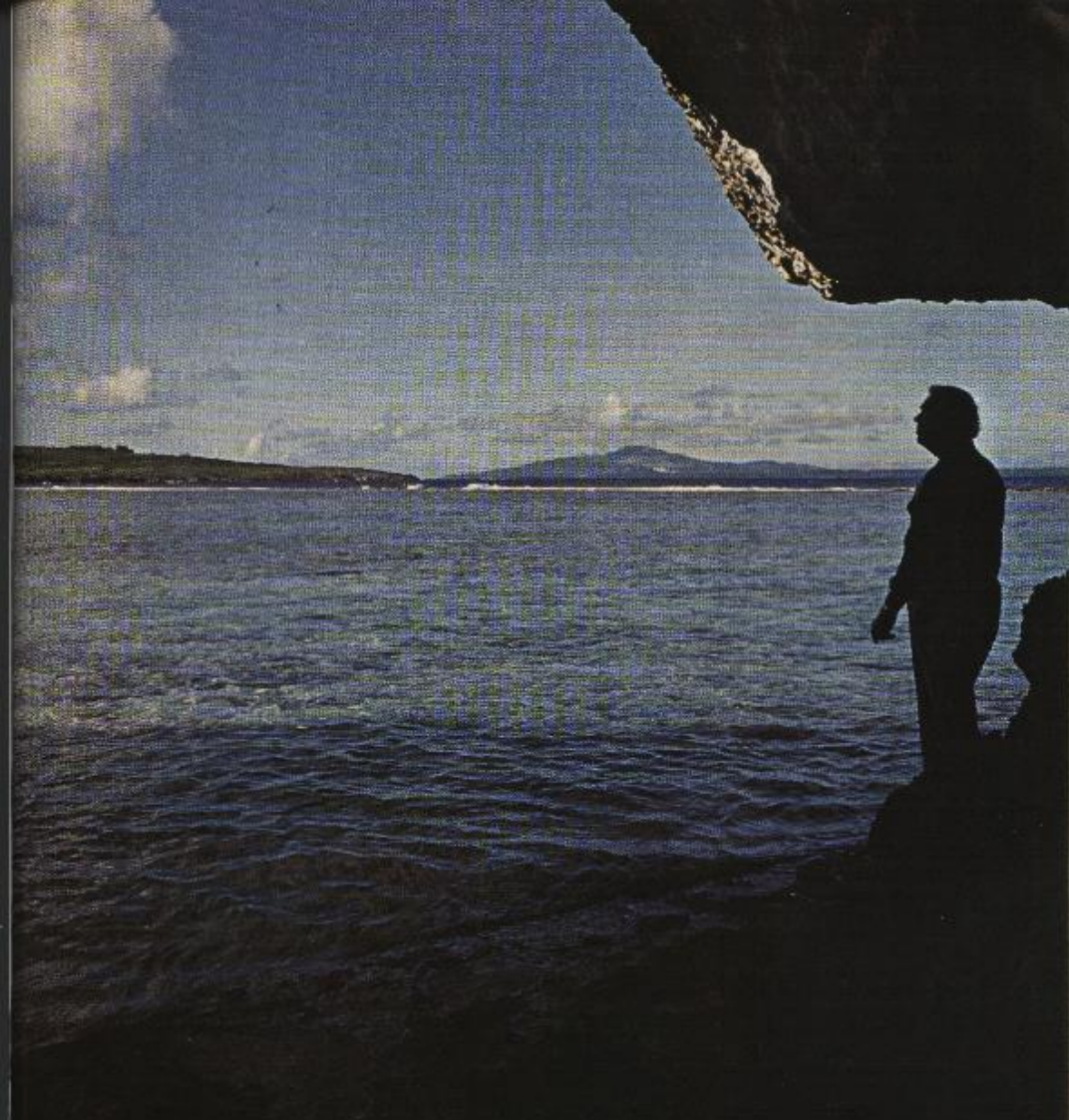
Photo courtesy of Tuggle Collection



Residents unload livestock at what is now called Old Village



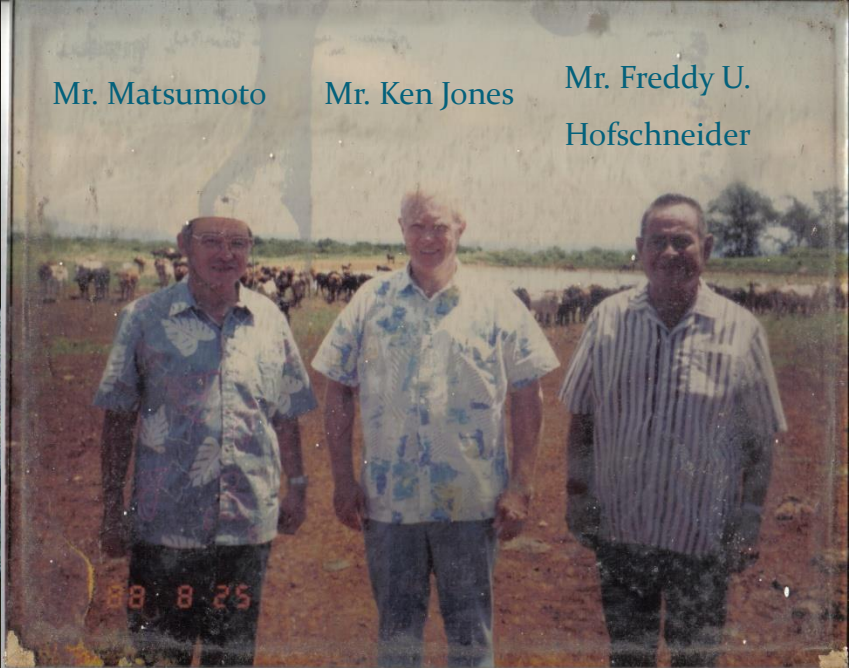




# TINIAN GOLD

Written by Frank J. Cunningham

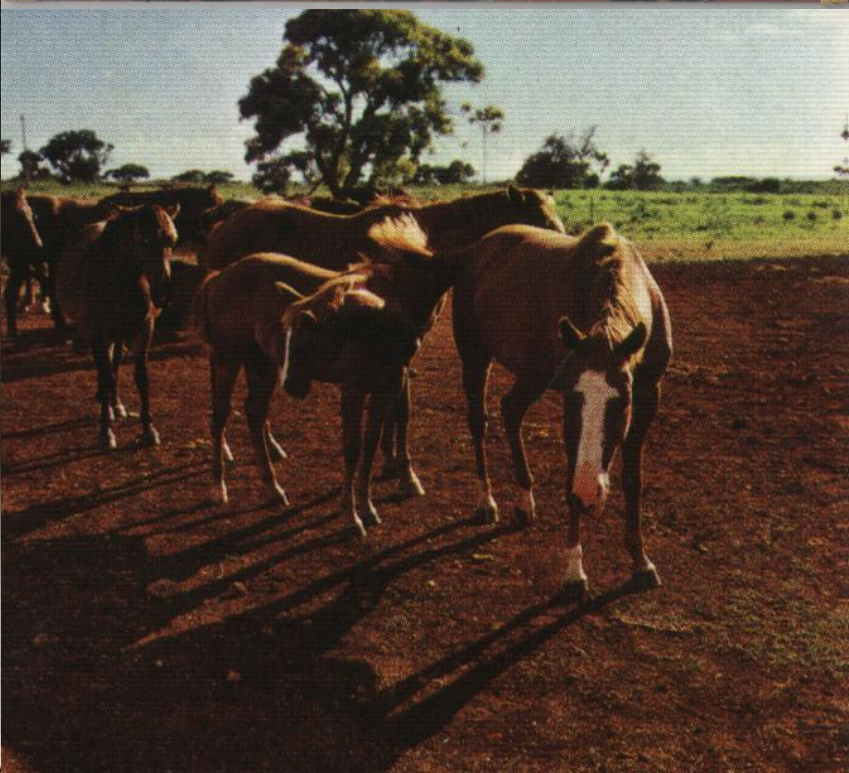
Photographed by Thomas E. Walsh



Mr. Matsumoto

Mr. Ken Jones

Mr. Freddy U.  
Hofschneider





# A History of Beef

- Up to 14,000 Head of Cattle raised on island in the past.
- Many Local folks have cattle ranching experience and training from childhood.



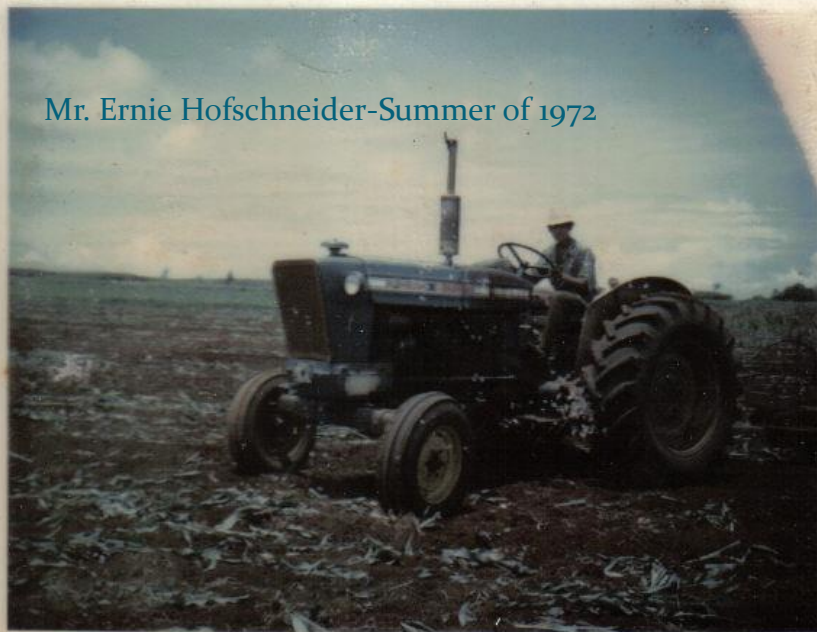












Mr. Ernie Hofschneider-Summer of 1972

Photo courtesy of Ernie Hofschneider and Family



Frank Hocog and Rufino Mendiola training in Japan

Photo courtesy of Florine M. Hofschneider and Family

Mr. Hofschneider and Son

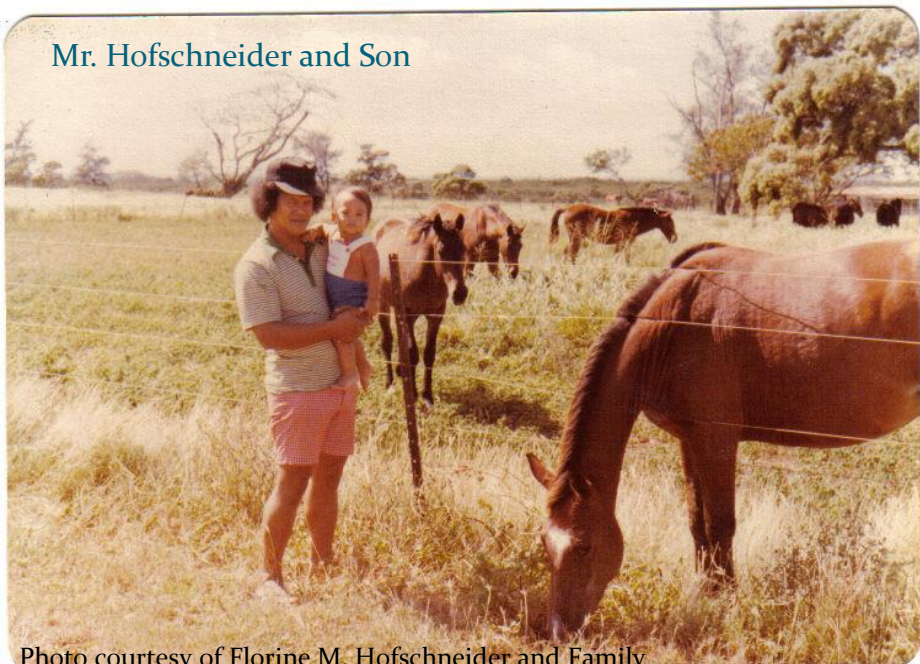


Photo courtesy of Florine M. Hofschneider and Family

Former Mayor Mendiola at his family ranch with friend

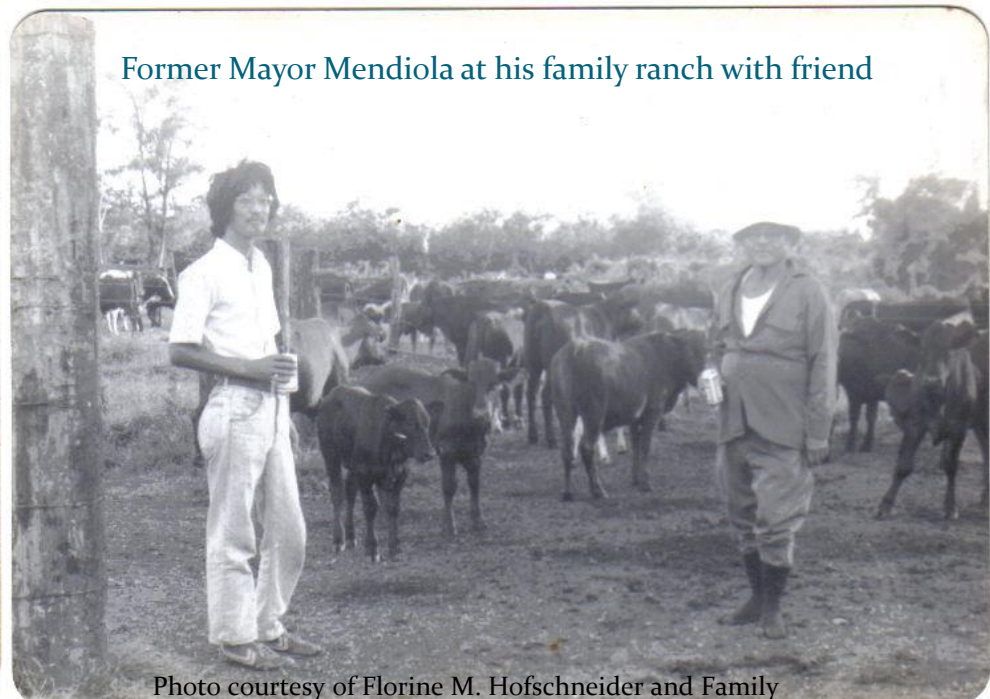


Photo courtesy of Florine M. Hofschneider and Family



# Cultural and Socio-Economic Considerations

- Cattle Ranching, processing, and consumption of Beef has become part of the Islands Culture and Family Traditions (Brings family together).
- **Significant for house-hold economics, compared to purchasing in stores.**
- Loss of Ranches(Meat for home consumption)results in reduced investment potential per household.
- **Ranching provides local people with access to Fresh Meats(Human Health)**
- Household consumption of locally grown Beef provides for a significant portion of total protein consumed. Majority of our residents eat Tinian Beef















**TINIAN CATTLEMEN'S**  
A S S O C I A T I O N

**Mission:**  
**To Stimulate Interest,  
Development, and Growth of a  
Grass-fed Beef Cattle Industry for  
Tinian**

Jose Delacruz(President), Sam Palacios(Vice-  
President), Frank Diaz( Treasurer), Lawrence  
Duponcheel(Secretary), Ignacio  
Aquiningoc(Director), Frank Borja(Director),  
Eugenio Villagomez(Director), Julie San  
Nicolas(Director), Esteban Borja(Director)























# Senepol Bulls for July A.I. Program

HBC 7115 48K



**Born on 5-11-2000 Honey Bee Creek, Georgia**  
For more information on this Bull and his leniage, visit:  
<http://www.bovine-elite.com/senepolepd2.asp?idProduct=542>

BJP 419 Rio Bravo



**Born on 5-16-1989 Breeder: Running B Ranch, Texas**  
For more information on this Bull and his leniage, visit:  
<http://www.bovine-elite.com/senepolepd2.asp?idProduct=541>



Breeds Introduced to the Islands via Artificial  
Insemination or live animal imports:  
Brahman, Santa Gertrudis, Angus, White  
Charolais, Holstein



















We Advocate for all producers!



## 2013 Tinian Beef Production Footprint-as part of the 2013 Tinian Herd Survey

-  Pastures shaded in Green are on Military leased lands
-  Pastures shaded in Blue are on private lands



### The Occupy Tinian Movement

742 hectares in production

37 Cattle Operations

All cattle and calves-1,043

Approx. 177 animals sold

Pounds sold \$88,500

Valued at \$70,800













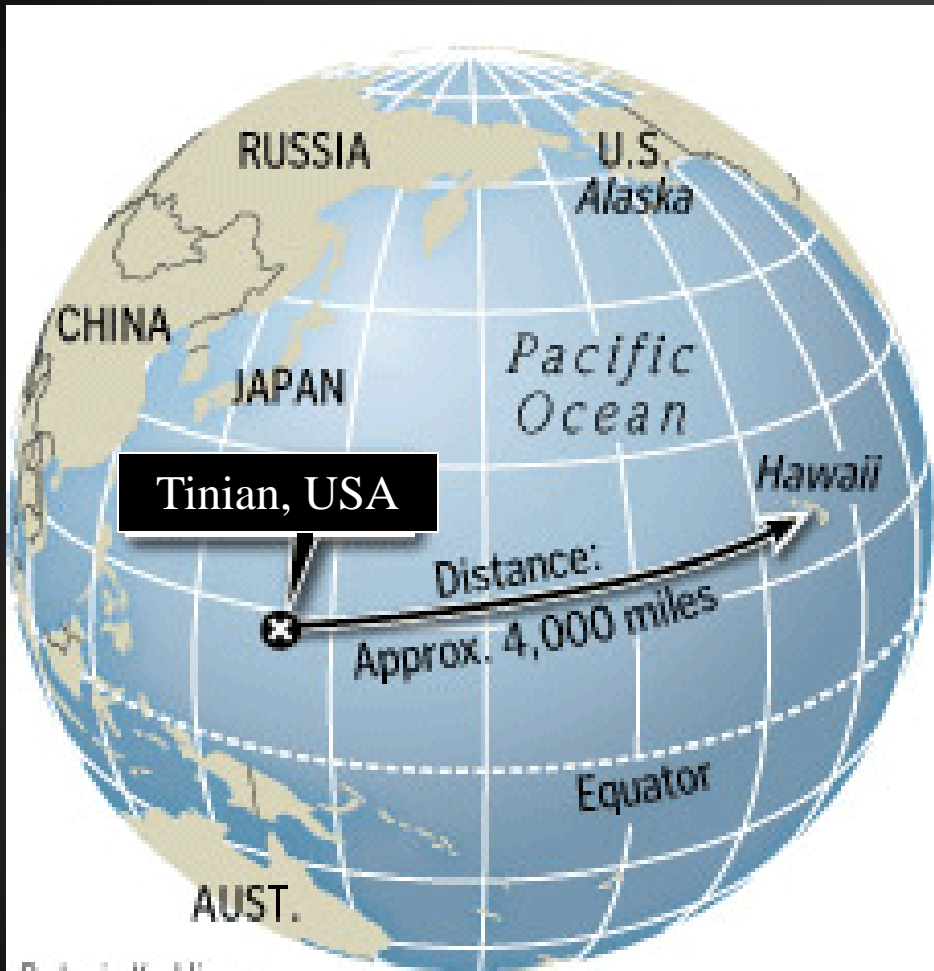


# Tinian's Green Readiness Initiative





# U.S. Government Accountability Office-Recommendations to DOD



By Laris Karklis —  
The Washington Post

-Use private sector food distributors to supply food to the military community faster and cheaper

-DOD could avoid unnecessary operational costs and increase its operational efficiency and quality of service by increasing its use of private-sector distributors

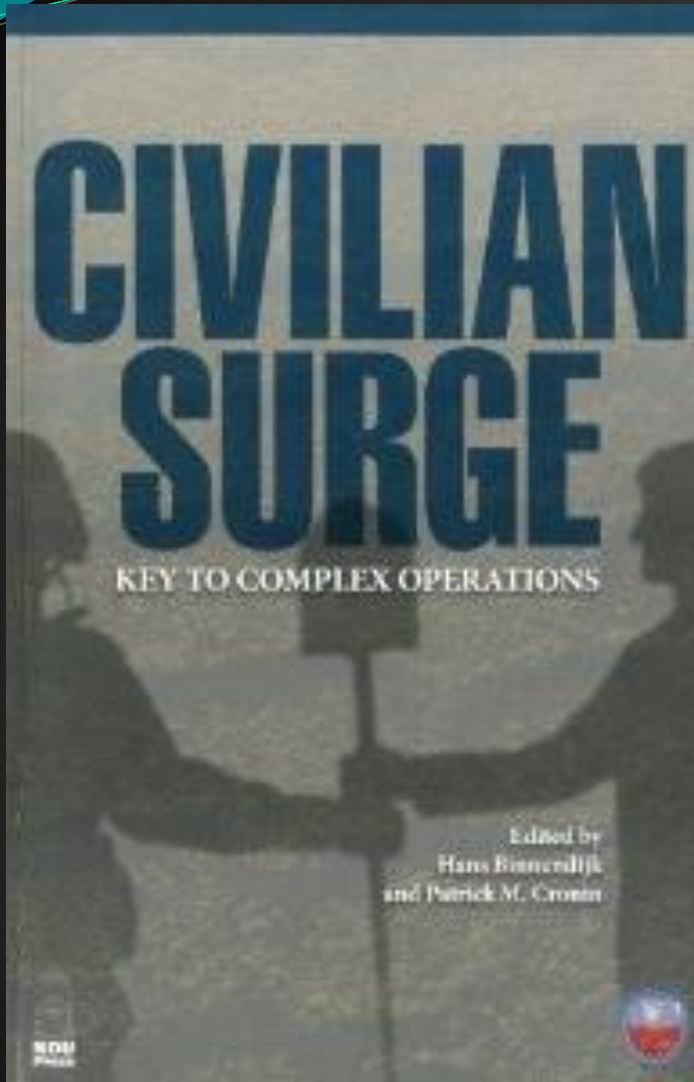
-To reduce costs and improve food quality and customer service through its limited use of private-sector distributors

## Department of Homeland Security

Lessons Learned Information Sharing (LLIS)-

-State and local public safety agencies must establish partnerships with private sector entities on emergency prevention, preparedness, mitigation, response, and recovery efforts to protect the nation's workforce, economy, and critical infrastructure.





“the study provides a framework for expanding civilian operations and creating new capabilities for civilian agencies to operate in ways that compliment military efforts...” “

US Agency for International Development-AIDS

“From the American People”

Agriculture and Food Security

Farmer to Farmer Program

Increasing Food Security through Feed the Future

Food Aid Reform

Expanding and enhancing Agricultural Markets  
and trade

Supporting Agricultural Capacity Development

Supporting Global Nutrition

Investing in Sustainable Agriculture



## “Green Readiness” in North Carolina

NC State University-College of Natural Resources



**SENTINEL  
LANDSCAPES:**  
Linking Conservation,  
Working Lands and  
National Defense

Linking Agriculture and Defense can provide a foundation for sustainable development in eastern NC, strengthen the State’s economy, and maintain military readiness

The two primary focuses of the project are: 1) using market-based approaches to incentivize compatible land uses on private lands under the eastern NC military training route, and 2) bolstering local economic activity through the Food and Fuel for the Forces initiative

Agriculture in NC- \$76B Defense- \$26B and NC 3rd largest contributor to Defense

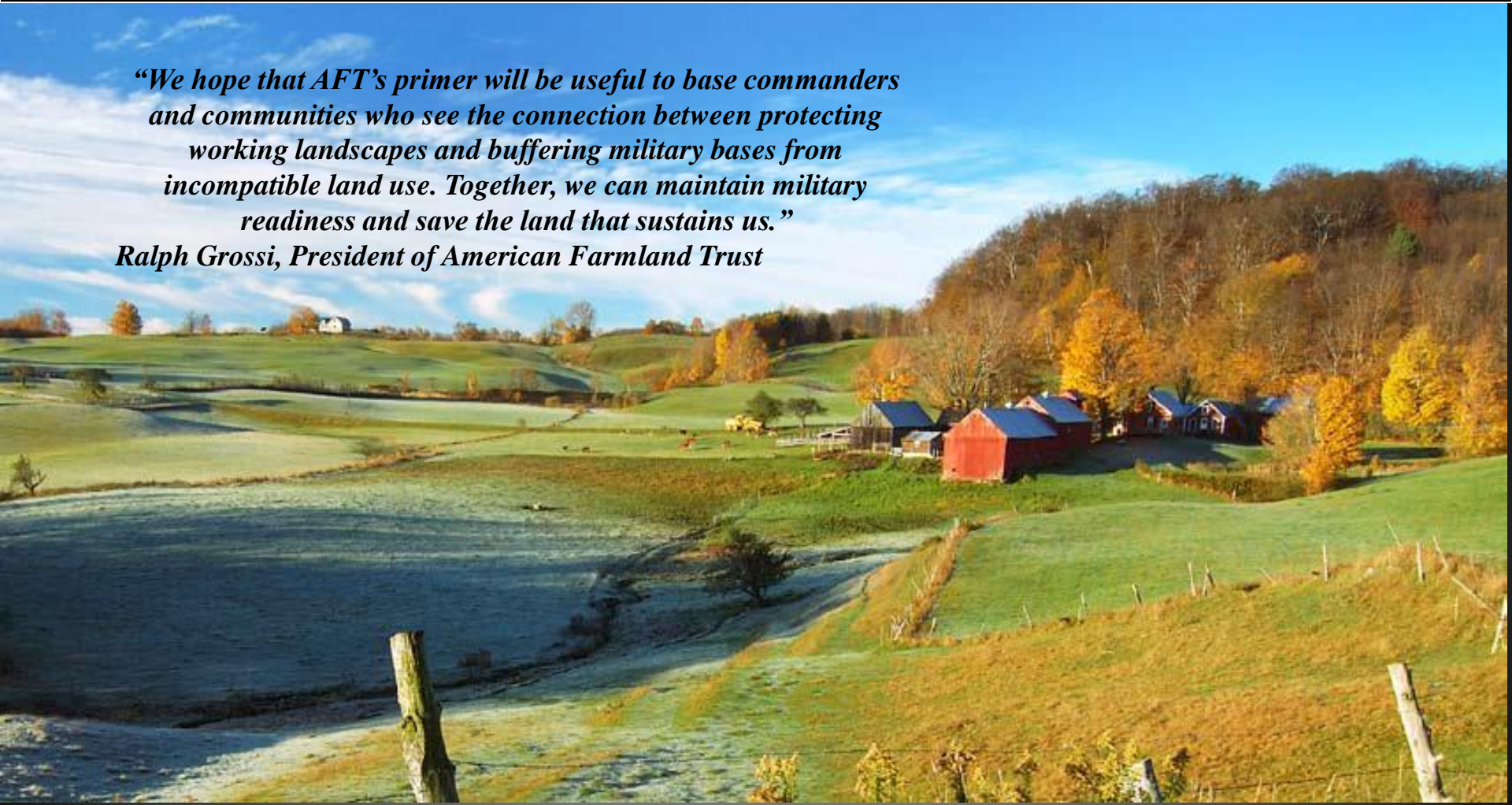


# American Farmland Trust

## Working to Preserve Farm, Forest and Ranch Lands: A Guide for Military Installations

*“We hope that AFT’s primer will be useful to base commanders and communities who see the connection between protecting working landscapes and buffering military bases from incompatible land use. Together, we can maintain military readiness and save the land that sustains us.”*

*Ralph Grossi, President of American Farmland Trust*



Department of Defense Funded Publication





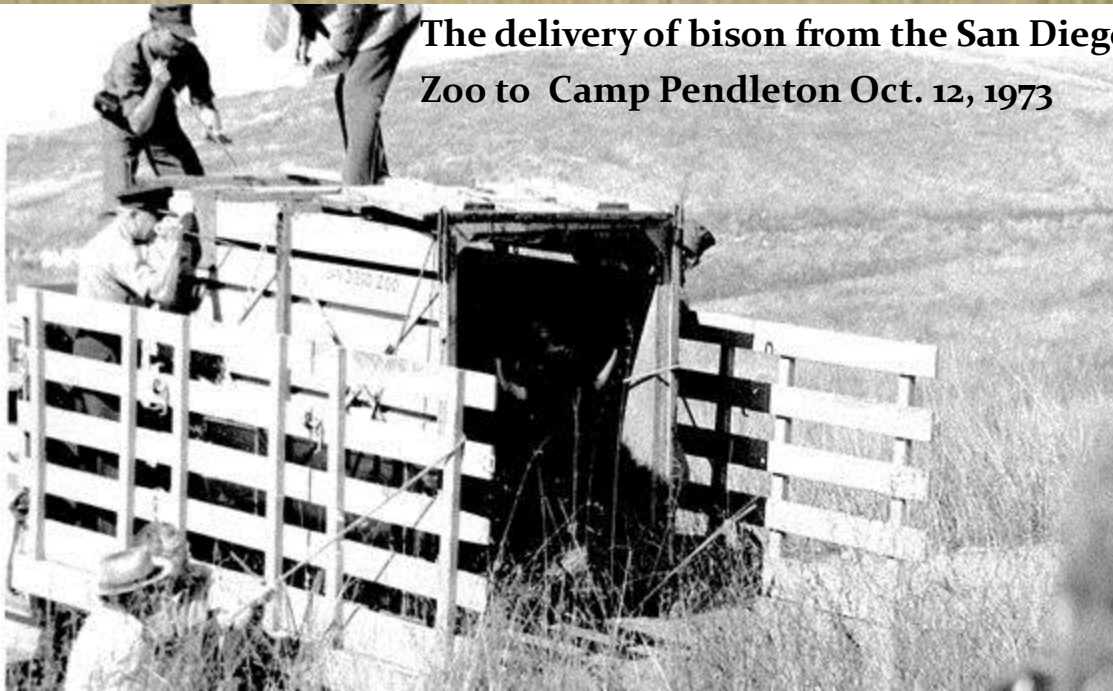
# The American Bison and 17 other endangered species are protected and managed On Camp Pendleton-San Diego, California



**“The Bison Story” is part of the oral history program coordinated by the base museum officer, Faye Jonason.**



**The delivery of bison from the San Diego Zoo to Camp Pendleton Oct. 12, 1973**





# Governor's Land Compatibility Task Force Report

## *North Carolina*



“North Carolina has a vested economic interest in preservation of land uses that are compatible with military activities, and that support agriculture/agribusiness and conservation of natural resources.”

“The Governor’s Land Compatibility Task Force was charged with Developing recommendations for maintaining and enhancing the military presence in North Carolina through preservation of land uses that are compatible with the military mission and that also preserve and sustain economic development and natural and cultural resources.”



# Readiness and Environmental Protection Integration (REPI) program-Buffer Partnership

The Department of Defense's (DoD) Readiness and Environmental Protection Integration (REPI) program protects the Nation's military readiness, enhances relationships with communities, and preserves the environment.



Since program inception, REPI buffer partnerships have protected **over 260,000 acres of buffer land in 66 locations in 24 states.**





## Regional Readiness Cooperative

Establish a forum for collaboration among scientists, practitioners, policy innovators and planners to promote natural resource sustainability that ultimately ensures national military readiness





Sugarcane farmer on Torii Army Station



Kunio Ikehara

Farmers on Kadena Air Force, Okinawa-taking a break







Plans for future developments on Tinian should involve a holistic approach Based on the concepts of sustainability, strengthening, and ensuring the Well-being of all Tinian residents, military and civilian alike.

Thank You!